

Landcare News



Spring Newsletter

September- October 2016

Chairs Report

Welcome to another newsletter and the new growing season here at Bellinger Landcare. We have held a couple of very well attended workshops in August on common garden weeds and their control and bush regeneration principles. As well, many people took the opportunity to talk to us at the recent plant fair.

The population in our Shire is constantly changing with new people coming in who are keen to learn how to look after their environment and our landcare network is the perfect place to help with information and resources. I met with new neighbours just a couple of weeks ago who are keen to learn how to look after the Koala food trees that were planted by our landcare group on their land three years ago.

Natasha has prepared a new project application to the Environmental Trust for Koala habitat improvement on public land in State Forest as well as private adjoining properties. She also provides an update here about the other projects she is currently working on (see page 5).

Kara is managing our administration as well as general network activities that promote membership and landcare work across the shire.

Our executive committee is close to completing a strategic plan for our organisation and we are already planning our end-of-year gathering / celebration which doubles as our Annual General Meeting. Since our last AGM was so well received as an outdoor and on-site meeting at Urunga, we decided to continue with that theme and take the event to Thora this time (see website for details). So, please save the date **Sunday, November 20th**, and bring your family along also.

Happy landcaring,
Pia Dollman

PS: We would like to request to the general membership to consider joining the Executive Committee for 2016-17 as we would welcome new people to add extra depth and ideas to our existing committee. It is a great group of people and very rewarding being involved.

In This Issue

- Recent Events 2
- News 3-4
- Projects Update 5
- Environmental Levy 6
- Information 7
- Upcoming Events 8-9



Photo: Mick Webb EnvITE



Bellinger
Landcare
Inc.



Recent Events



Garden Escapes

A huge thanks to Kim Cheney from Bellingen Bush Regenerators and Amanda Norman (BLI staff) and the Bellingen Showground Trust for organising our Garden Escapes Workshop in August. We would also like to thank Marc Percival from Agrisense who is the regional agent for the Steamwand International range of steam weeding machines, service them and contract to people who do not wish to buy a machine. Marc Percival is a qualified horticulturist of 34 years standing. Marc is available on 0409 185 680 and happy to give obligation free quotations on contracting or machinery.



Basics in Bush Regeneration



Our Bush Regeneration in coastal environments was presented brilliantly by contractor Joe Losurdo. As we saw the extensive work done so far at the reserve in Mylestom by the Darrunda Wajaarr team and Mylestom Landcare, a big thanks to Lynne Gordon. And Landcare Australia for making this workshop possible.



News

Volunteers wanted for annual Bongil Bongil Koala Survey



This program is in its fourth year and again looking for volunteers to do one 2 hour survey every 4 nights, a total of 5 nights work over 16 days. Teams walk the park's trails using gear supplied, such as spotlights and audio equipment and the results provide important data about the presence and health of Bongil Koalas.

Those interested in participating in the program or who would like to know more about it are urged to contact Ranger Martin Smith at the NPWS Coffs Harbour office on 66520 900 or by e-mailing him at martin.smith@environment.nsw.gov.au.

Visit OzGreen's Crowd Funding Campaign to help save the Bellinger River Snapping Turtle.

The Bellingen community has a key role to play to bring the turtle back from the brink. We have 5 years to restore river health. Help us raise \$5000 to involve local schools in MYRiverR 19-23 September.

To find out more visit:

<https://chuffed.org/project/save-the-bellinger-river-snapping-turtle>



Make every bird count



Aussie Backyard Bird Count

National Bird Week 2016 will take place between **Monday 17 October and Sunday 23 October**.

You too can celebrate National Bird Week by taking part in the biggest citizen science project to hit Aussie shores!

To get involved all you need is 20 minutes, your favourite outdoor space, and some keen eyesight.

Simply record the birds you see on our [Aussie Bird Count app](#) or through the [Submit a Count](#) tab on our website. You'll instantly see live statistics on the number of people taking part and the number of birds and species counted in your neighbourhood and the whole of Australia. Visit <http://aussiebirdcount.org.au/>

News

Parra Trooper is now here

This product has been commercially developed and it contains hyphae and spores of the soil fungus *Nigrospora-oryzae*, which was isolated as causing Crown Rot in Giant Paramatta Grass (GPG). It occurs naturally and was first discovered in the Orara Valley. Crown Rot has been successfully transferred from infected properties by transplanting effected clumps of GPG. The fungus spreads to healthy GPG plants and can cause up to 78% reduction in tussock size and significantly reduces the presence of GPG plants altogether. This new product comes in a packet of dry plant material, which needs to be washed into water, strained through a fine mesh and then sprayed onto the paddock at a rate of 200 L to 1 ha. If this product shows to be effective, this is what you would observe:

- ☐ orange-coloured seedlings
- ☐ Affected stems pull out easily
- ☐ A burnt look to the base of the stems
- ☐ Earlier haying-off and a reduction in the number of plants in a tussock
- ☐ Reduction in the vigour of surviving plants.

Crown Rot symptoms are most obvious in seedlings and in new growth after heavy grazing or slashing. While the fungus is active throughout the year, symptoms of crown rot are most obvious in spring. Other weedy *sporobolus* grasses including Giant Rats Tail Grass are also affected by this fungus.



Crown rot affected plant with yellow stems in the centre.

WEED ALERT

Seeded Banana (*Musa balbisiana*)

Look out for Seeded Banana (*Musa balbisiana*). Seeded banana are ornamental bananas, they look like lady finger bananas being approximately finger length, however, they are full of seeds and not edible.

The task of eradication is difficult because of the large number of seeds produced by seeded banana. Seed longevity lasts in the soil for several years, so that they would remain as a potential pest and disease host for many years. The growing of seeded ornamental bananas is now prohibited by law in Queensland.

(<http://rfcarchives.org.au/Next/Fruits/Banana/BananaRisk11-91.htm>)



Projects Update

Bellinger Landcare NEW Landholder Booklet

The landholder booklet contains information on best practice management in your riparian zone. The landholder booklet will be available at our stall at the Turtle Festival, this October long weekend.

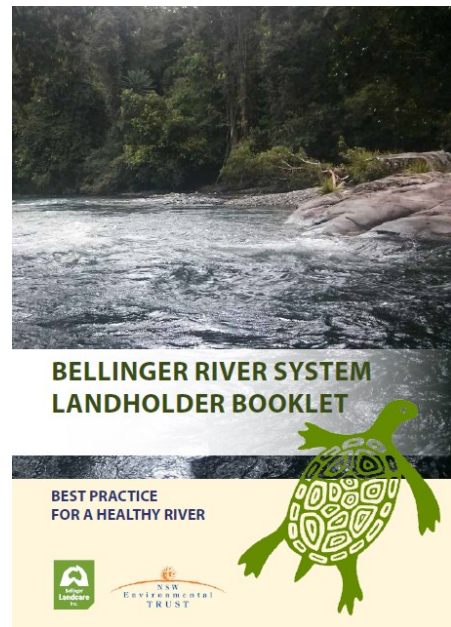
A free publication produced with funding from the NSW Environmental Trust. There will be limited numbers available for free.

Or view online and download from our website on the Home Page under News.

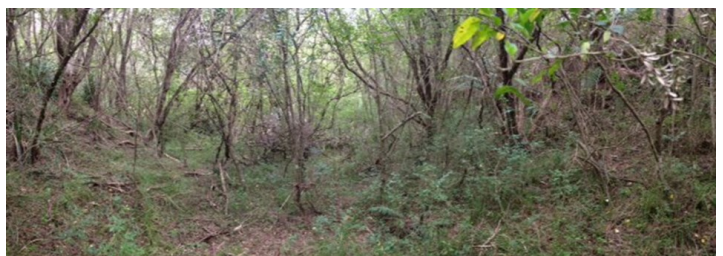
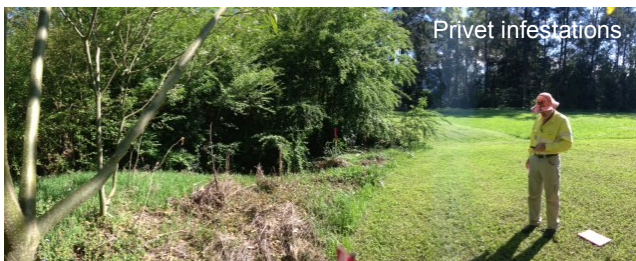
www.bellingerlandcare.org.au

Bush Connect

The Jaliigirr Biodiversity Alliance is a partnership of 20 organisations that work together across all land tenures and communities to improve landscape connectivity. The focus of on-ground works will be on bush regeneration with some areas of revegetation and complemented with capacity building activities - to restore essential & viable habitats for forest-dependent fauna. Works include Coffs Harbour Local Aboriginal Land Council repair to country priority sites and the Dorodong Corporation Indigenous Protected Area. All sites are connected to the World Heritage Area of the region through a mosaic of land tenures including private landholder communities, Junuy Juluum, Bindarri, Dorrig National



Parks, Tuckers Knob, Pine Creek and Orara East State Forests. This September has seen the commencement of works at 8 sites, with particular emphasis on setting up photo-points to record the changes that will occur over time. As part of this project, Bellinger Landcare are organising a community event that looks more closely at why we are protecting and planting native vegetation from a broader ecological perspective. In particular the relationship of insects and vegetation and the little known world of hollow dependent fauna. See page 8 for more information.



Environmental Levy

Environmental Levy and Community Grants

Open until 17th Oct

Bellingen Shire Council applied to the minister for Local Government in May 2005 for a special variation to General Income for environmental projects. On 30 June 2005 Council received notice that an increase of 4% was approved. Information on the projects that have been undertaken with these funds can be found at: <http://www.bellingen.nsw.gov.au/environment-waste/environmental-levy-and-community-grants>

As identified in the Shire of Bellingen 2030 Community Vision, the environment levy supports the implementation of projects to achieve the strategic directions, outcomes and aspirations for the future from our local community. The key focus areas are as follows;

- Invasive plant management
- Biodiversity management;
- Coastline, estuary and river management;
- Sustainable food production; & Climate change adaptation and mitigation.



A portion of Environmental Levy income has been allocated to the delivery of Council's Environmental Levy Community Fund grant program. Funding applications can be made by community groups to deliver projects up to a maximum value of up to \$5,000 each, implemented on public land or land that is readily accessible to the public. The focus is on projects which:

- Concentrate their activities at the local level, across the shire;
- Maintain and/or protect existing environmental achievements and/or assets;
- Develop programs or projects which build community capacity;
- Contribute to behaviour change outcomes;
- Meet environmental sustainability priorities identified in BSCs 2030 Community Vision; and
- Foster innovative and creative solutions which meet an identified environmental sustainability need.

Community groups who are successful in gaining funding under this program are encouraged apply for external grants where appropriate to match, and therefore maximise the funds. It is critical to contact Sandy Eager at Council prior to submitting an application to discuss your idea.

Contact

Manager of Sustainability & Natural Resources

02 66557338

council@bellingen.nsw.gov.au

Information

ORGANIC FARMING SNAPSHOT

North Coast LLS has commissioned research to help meet the needs of the North Coast organic farming sector.

Eco Logical Australia (ELA) was commissioned by the North Coast Local Land Services (NCLLS) to provide an overview of organic agriculture in the North Coast region of NSW. The project scope included the following broad objectives:

1. Outline of the organic sector in Australia
2. Outline of the organic sector in the NCLLS region
3. Summary broad socio-economic indicators associated the organic sector in the NCLLS region
4. Outline of three (3) prominent organic industries in the NCLLS region

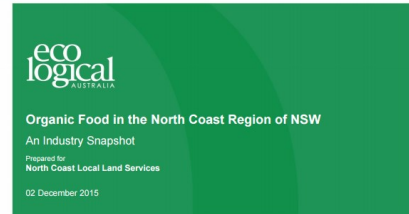
For the full document visit http://northcoast.ils.nsw.gov.au/_data/assets/pdf_file/0008/587195/ncls-organic-farming-north-coast.pdf

Eucalypt Identification Sheets kindly given to us by Ross Macleay are now available on our website under

Resources and Brochures and Fact Sheets

COMMON EUCALYPTS AND RELATED SPECIES OF THE BELLINGER VALLEY: TABLE OF RECOGNITION

COMMON EUCALYPTS OF THE DORRIGO PLATEAU and COMMON WETLAND SPECIES OF THE BELLINGER VALLEY

[illegible][illegible]

Please note they are all over five years old so there may be one of two name changes to some of the species since then
(in the wetland leaflet)

Upcoming Events

Friday 11th November Bush Connect Event



The Jaliigirr Biodiversity Alliance will be hosting a fascinating half day event as part of its Bush Connect Project funded by the NSW Environmental Trust. It is a free event designed for landholders particularly those living in the Dorrigo area and hopefully attended by some of the landholders currently involved with this project instigating works on their properties. Places will be limited, so it is critical to register by phoning our office 66550588.

Friday 11th November, 10am – 2pm

Location: Dorrigo

Speakers:

Nigel Andrew—Assoc. Prof Entomology at UNE

Nigel Cotsell (OEH)

Nina Lucas—solicitor with the EDO (Environmental Defenders Office)

Nigel Andrew - ‘How insects respond to climate change’

Nigel Andrew is the President of the Ecological Society of Australia and Associate Professor of Entomology at the University of New England. He will speak on assessing **insect responses to climate change**.



Insects are amazing and most are tiny. But they are so ancient and abundant that they play essential roles in ecosystems and agriculture. Like everything else, insects will be affected by climate change. Will many insect species be able to move or adapt quickly enough to survive and keep providing ecosystem services? How can insects be used to assess how climate change interacts with land use management and land cover and assist in making appropriate land management decisions?

One of the great challenges in predicting how biological organisms will respond to a rapidly changing climate is determining if responses of organisms are idiosyncratic, or whether general statements can be made based on evolutionary relationships, or ecological associations.

Nigel Cotsell - OEH

Nigel Cotsell is a Senior Team Leader with the Ecosystems and Threatened Species Regional Operations Group of OEH. Nigel Costell will present his findings on a comprehensive camera trap study that was set up to examine **hollow usage by wildlife in the canopy of trees**. Eighty cameras directed at tree hollows were deployed across eight sites in nine species of eucalypt in north-east New South Wales. He will also discuss the term ‘old growth’ and what this means in relation to Northern NSW.



Plate 7. Regent bowerbird *Sericulus chrysocephalus* – Swans Road

Nina Lucas - solicitor with the EDO (Environmental Defenders Office)

EDO NSW is an independent legal centre specialising in public interest environmental law. Nina Lucas is a solicitor with the EDO and will conduct a presentation addressing the legal framework for private conservation mechanisms, as well as providing an update on the NSW Government’s biodiversity law reforms and what these mean for private conservation.

Upcoming Events

20 - 27th November Australian Pollinator Week

Australian Pollinator Week



20 – 27th November, 2016

Pollinators drive biodiversity

- 75% of flowering plants rely on insect pollinators to reproduce
- The world is suffering major pollinator declines

Join us in celebrating the importance of insect pollinators

go to <http://beesbusiness.com.au/pollweekmain.html>

[facebook.com/groups/beeawareofournativebees](https://www.facebook.com/groups/beeawareofournativebees) to share your ideas and pictures Supported by Western Sydney University

http://www.westernsydney.edu.au/rcegws/rcegws/biodiversity_and_river_health/bee_aware

Free Soil Biology and Compost Field Day

Are you interested in soil biology or want to know about compost?

This field day is hands on and landholders are asked to bring along a cube of their soil in a bucket for assessment on the day.

Topics, Demonstration and Display

What is Soil Biology and how do I manage it well?

How to assess your Soil Biology in the field – hands-on demonstration

How to assess Compost and it's Quality – hands-on demonstration and display

How do I use Compost and what are the benefits?

Workshop Presenter: David Hardwick Agricultural Ecologist from Soil Land Food
www.soillandfood.com.au

Date: 9 December 2016

Time: 10:00am for a 10:30am start – 2:30pm

Venue Location: Dorrigo Showground Luncheon Pavilion
Morning Tea and Lunch Provided

Please bring along a hat, sunscreen and wear closed in footwear.

RSVP by 6 December 2016:

Selina Miller, Local Land Services Officer (Phone: 6604 1112 /Mobile: 0437 013 367 or Email:

selina.miller@lls.nsw.gov.au)



FEB 05-09 / 2017

A Conference on Restoring Ecological Processes, Ecosystems and Landscapes in a Changing World

University of New England

Armidale, New South Wales Australia

Over five days in February 2017, you are invited to the University of New England to contribute to our joint understanding of the challenges and successes in restoration, revegetation and reintroduction in a fast-changing world, with some of Australia's and the world's leading practitioners, scientists, consultants and advisers working in this space.

<http://conferencecompany.com.au/revegconf2017/>

Contact Us

Bellinger Landcare

1a Oak St
Bellingen 2454

(02) 6655 0588

belland@westnet.com.au

Visit us on the web at our
NEW website

www.bellingerlandcare.com.au



Bellinger
Landcare
Inc.



This newsletter is produced by the Bellinger Landcare Office with assistance received in funding from North Coast Local Land Services. Whilst every effort is made to publish accurate and up to date information, BLI and its employees do not accept responsibility for inaccuracies and or opinions that may be expressed in this newsletter.



**Local Land
Services**
North Coast

Bellinger Landcare News—Number 68 Spring 2016