

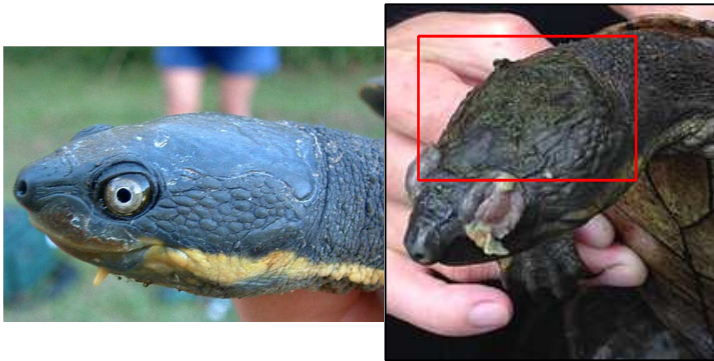
Georges Snapping Turtle *Myuchelys georgesii*



Cervical scute absent

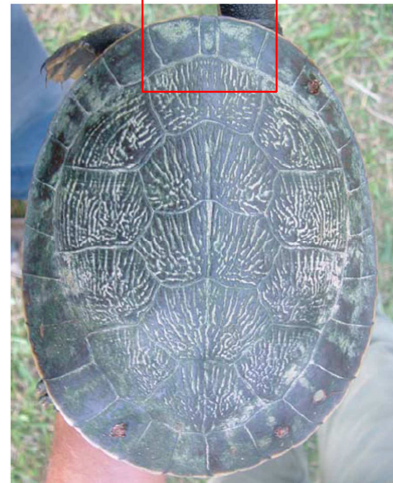


Shell underside (plastron) blotchy, darkened scute margins present



Horny head shield present, even at young age;  
Iris silver;  
Lower jaw barbels present but more noticeable.

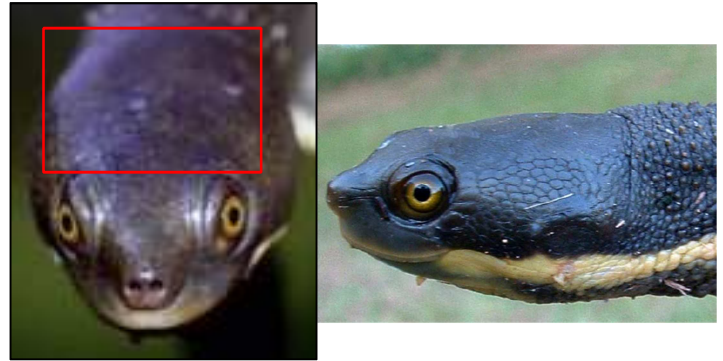
Bellinger River Emydura *Emydura macquarii*



Cervical scute present



Shell underside (plastron) not blotchy, darkened scute margins absent (or not distinct)



Horny head shield absent (or much less developed e.g. large females);  
Iris variable but not silver;  
Lower jaw barbels present but less noticeable.

**Identifiable hybrids have head shield of *M. georgesii* but the clear plastron and ventral marginal scutes of *E. macquarii***

**Please look out for the following animals, and record all observations:**

- Water dragons
- Snakes
- Frogs and tadpoles
- Goannas
- Eels and catfish

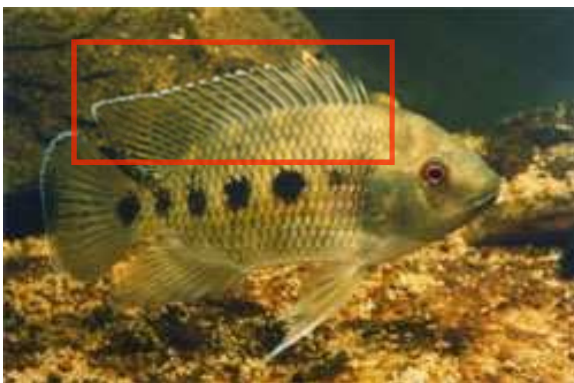
**Observations include:**

- Dead/alive
- Where seen
- How many seen
- Behaviour

Tilapia species



Rounded tail (male top, female bottom)



Continuous dorsal fin

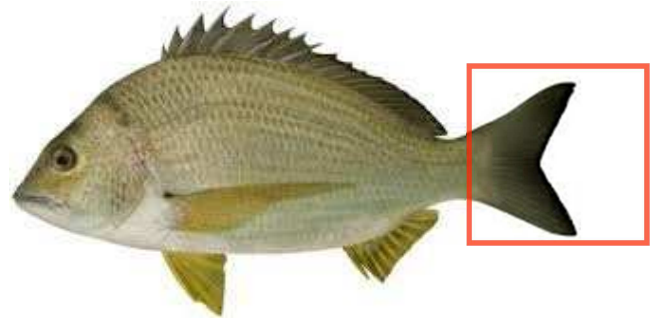


Pale olive to silver-grey bodies, <40cm long

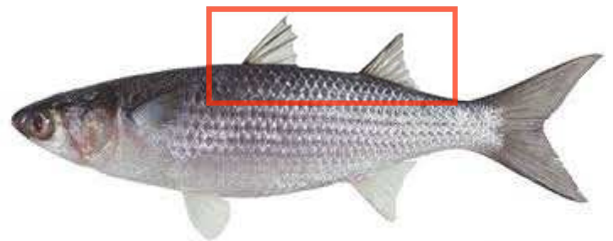


**Tilapia nests**  
Circular nest in muddy/sandy material, usually

Native Fish



Freshwater Bream - forked tail



Freshwater Mullet - short, distinct dorsal fins



Eel-tailed Catfish - eel shaped body and whiskers



**Eel-tailed catfish nest**  
Gravel substrates, not usually in clusters