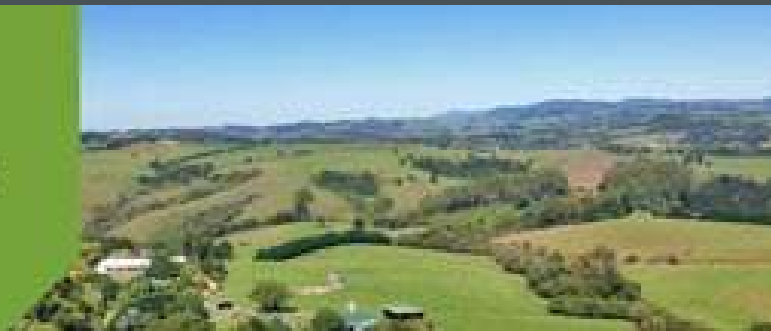




Bellinger
Landcare
Inc.



I would like to thank Amanda Norman for all her amazing work and assistance to me here in the office. It does feel strange not to have her around anymore. She was efficient, with an eye for detail and made me laugh. With the reduction in office hours, it will be important that people call ahead to make sure I am in the office and make a time to see me. I am often out on site or participating in an event, or at meetings. This would be greatly appreciated.

Natasha English

Please also note that the office will be closed from July 11th-19th, re-opening on the 20th

Another wet winter – it appears that our rainfall pattern is changing from summer and tending to winter rainfall. Not sure how we will cope with that...

We had to make changes to the staffing of our organisation as our financial situation became clearer:

Thank you to committee member Amanda Norman who supported us on a casual basis without any job security. Unfortunately, we had to save on that position and also reduce Natasha's hours from four to three days per week. Colin will continue to manage the finances on a needs basis.

In my work with Blueberry Farmers in the Coffs Harbour Shire, we recently held a field day and invited a WIRES volunteer to talk about the danger of netting to wildlife, in particular snakes. He described how he saved a Red-bellied Blacksnake from netting at one farm where he also found another four snakes that had perished. Snakes can't back out of netting, their scales catch them and they ringbark themselves in their struggle. He pointed out the importance of rolling up and securing netting so it doesn't trail on the ground.

In the same vein, last week I came across a strange looking shape in barbed wire fencing which turned out to be a Tawny Frogmouth. The barb was stuck in its eye socket and while we could get it out and remove all the wire, we could not save the eye.

The top strand of a farm fence should be plain wire to prevent this type of accident. We have brochures on wildlife friendly fencing and netting in our office. And please pay some attention to the review on Travelling Stock Reserves, carried out by LLS. If you have an interest in any of these reserves, take the time to contribute to the review.

Happy Landcaring,

Pia Dollmann

IN THIS ISSUE

- Wildlife Friendly Fencing
- Wildlife Friendly Netting
- Around Bellingen
- Bellingen RiverWatch Project Update
- Biochar Conference information and 20 Million Trees Funding
- State and Territory Landcare Awards
- Landcare NSW funding/information

A tale of two fences

In the city

Louise lives in the city near a park and found a glider caught on a barbed wire security fence. She worked with the Council to find a solution. The Council replaced the barbed wire with plain wire and planted more trees near the fence to shorten the gliding distance.



In the country

Geoff, who lives on a rural property with cattle, found a flying-fox caught on his barbed wire fence. The bat had come to feed on a nearby native shrub.

Geoff decided to keep the shrub as it was an important feed tree for various animals. He covered the top two strands of barbed wire near the shrub with polypipe painted white.



86% of recorded wildlife entanglements occur on the top strand of barbed wire fences



Fences close to water prevent wetland birds from landing and taking off safely
www.ozcranes.net

Each year thousands of animals face a cruel death entangled on barbed wire fences.

Many nocturnal animals like bats, gliders and owls fail to see the fence or cannot clear the height in windy conditions. Over 75 wildlife species have been recorded as fence victims, most caught on the top strand.

Kangaroos and emus can get hung up on plain wire and mesh fences. If the fence is too high the animals' legs can become caught in a twist of wire. Low wires and tension droppers may prevent larger animals from squeezing through the fence.

Wildlife need to move freely and safely across our landscape unless being purposely excluded for safety and other reasons.



What can you do?

- Encourage wildlife friendly fencing in your local area. Talk to neighbours, councils, NRM groups, fencing contractors and suppliers.
- Monitor barbed wire fences in your local area. Report any entangled animals to your local wildlife rescue organisation, found at www.fauna.org.au

Do not approach a trapped animal as it is likely to struggle and do more damage. Where possible, leave the rescue to an experienced carer who will untangle the animal with minimal further injury. Do not handle flying-foxes.



www.wildlifefriendlyfencing.com



CARING
FOR
OUR
COUNTRY



Tolga Bat Hospital

Doing some fencing? Make it wildlife friendly!



wildlifefriendlyfencing

Designing friendly fences

Stop and think

Do you really need a fence? How will a fence affect the wildlife? If there are no animals to keep in or out, could a line of native trees do the job?

Avoid barbed wire

When fencing livestock, consider using a combination of plain wire and electric fencing. If using barbed wire, the main issues are fence placement, visibility and type of top strand, especially in entanglement hotspots.



Reduce tangle hotspots

To reduce the risk to wildlife, avoid placing barbed wire fences on ridge lines, near feed trees, across wildlife corridors, over or near water bodies.



Visit our website for details of a tool to easily split polypipe

To remedy an existing hotspot:

- replace barbs with plain wire
- cover barbs with split polypipe
- make the fence more visible.

Increase visibility

Wire gates are often hard to see and a danger to humans and wildlife. Plastic bags offer a short-term fix. A better way to improve visibility is to use white nylon sighter wires or white electric fence tapes that flicker in the breeze.



Friendly fencing in action



Go to our website for details of the range of available white sighter wires. This includes nylon coated, solid nylon and electric wires.



40mm white electric fence tape on the top strand increases visibility. It can be used active or inactive on all fence types, including barbed wire.



Wise placement of a fence can make a big difference. To avoid the risk of a tangle hotspot on the ridge line this fence was placed below the ridge.



Post and rail fences can be made from wood or plastic. This one is also electric.

WFF is safe and effective for wildlife, people and livestock.

Helpful hints



Go online to watch our instructional videos showing how to build these two wildlife friendly structures, and more...

- Choose a smaller variety of fruit tree that is easy to protect, prune and harvest
- Use a supporting frame to protect the tree from the weight of the net, and prevent birds pecking fruit through the net
- Consider how you will access your fruit inside the net, Fruit Saver nets have an access flap for this
- The base of the net should be secured to the trunk of the tree or to the ground to prevent wildlife getting inside
- Remove nets promptly after fruiting to prevent damage to new growth
- Check your nets regularly. If an animal is caught visit www.fauna.org.au to find a wildlife carer in your area.



These densely woven nets protect your fruit and prevent entanglement of wildlife

Leading the way

Some hardware stores in Australia have taken the lead and stopped selling netting that is potentially harmful to wildlife. Ask your local supplier to stock only fruit tree netting that passes the 'finger test' - netting that you cannot poke your finger through.

For more information

Visit www.wildlifefriendlyfencing.com and look for the link to the netting page. Get up-to-date information including instructional videos showing how to net your trees in a wildlife friendly way.



www.wildlifefriendlyfencing.com



CARING
FOR
OUR
COUNTRY



Tolga Bat Hospital

Protect your garden fruit in a wildlife friendly way!



wildlife friendly netting
Harvesting with no net loss

Fatal attraction

Native animals, increasingly displaced from their natural habitat by tree clearing and extreme weather, are resorting to flowering and fruiting trees in our gardens.

Tree netting is a popular way to protect fruit from wildlife, particularly in urban areas, but the wrong type of netting can be deadly. Hungry animals are easily caught in 'bird netting', which has a mesh size greater than 1cm square.



This is the wrong type of netting - you can easily poke your finger through. It fails the 'finger test'.

The rescue statistics show that most animals die with horrific injuries or require long term care before release.

Tragic tangles

Birds, bats, lizards, snakes and the occasional possum are the main victims of inappropriate netting. Animals become tangled in large mesh netting and cannot free themselves. While struggling to escape, the net cuts ever deeper into the animal.

Net disposal

Like ghostnets in the ocean, unwanted netting can continue to maim and kill. Ensure that discarded netting cannot become a hazard to wildlife.



Tree netting guide

2 ways to protect your backyard fruit and wildlife

1. Protecting individual fruit.

Search online for 'fruit protection bags', look for Green Harvest and The Native Shop for a range of bags and sleeves. Plastic garden pots can also be useful.



Cover individual fruit



Fruit protection bag

2. Protecting the whole tree.

We recommend a densely woven net that will not trap wildlife and doesn't need a frame, such as the Fruit Saver nets, Hail Guard or Vege Net. These nets are all white - the colour best seen by animals at night. Go to our website for videos about these nets and other ideas.



Hail Guard over polypipe frame, fixed to the ground

The right netting

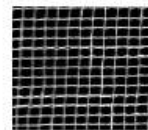
Our 'finger test' - choose netting that you cannot poke your finger through.

For smaller trees up to 13m in circumference, we recommend Fruit Saver nets, available in 2 sizes.

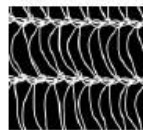
For larger trees, buy Hail Guard off the roll from Fernland Agencies www.fernland.com.au and Vege Net in 2 sizes from www.greenharvest.com.au.

3 good nets which pass the 'finger test'

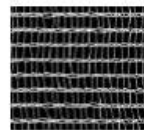
Netting shown 1:1 life size



Fruitsaver
2 sizes for small and medium trees



Hail Guard
Off 6 m roll



Vege net
2 sizes, 6m x 10m and 6m x 20m

Fruit Saver Fruit Tree Nets

This fitted box-shaped net has a long skirt that gathers around the trunk of the tree.

The 2mm woven mesh excludes fruit fly and codling moth as well as birds, bats and possums. It has only a 15% shade factor and is currently best bought online at:

www.fruittreenets.info



We recommend only using a densely woven net - use the 'finger test' to check

AROUND BELLINGEN



FRENCHMANS CREEK

Commencing in 2016 with funding received from the Australian Government, Frenchmans Creek, the bush and walking track area adjacent to the Bellingen Cemetery, has received some serious weed control and native revegetation. We recently started a small group of locals who said they would be happy to help out at a working bee when organised. Most recently, in July, Forestry NSW has supplied a team of Conservation Volunteers to also help hand weed a small area and fix up the tree guards around the native plants that were put in last year. If you would like to get involved please call us on 66550588



RAINFOREST IDENTIFICATION WORKSHOP

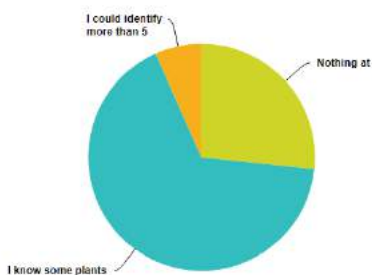
A big thank you to John Ross and all who participated in our Rainforest Identification Workshop funded by the NSW Environmental Trust as part of our Bellinger River Freshwater Habitat Action Project. A terrific bunch of all ages, trying their best to follow the botanical lead of John. It would seem this was a popular topic and a follow up workshop in the actual rainforest might be a good idea from the feedback.

Here is what you said about this workshop

STATISTICS

What did you know about rainforest plant before this workshop?

Answered: 15 Skipped: 1



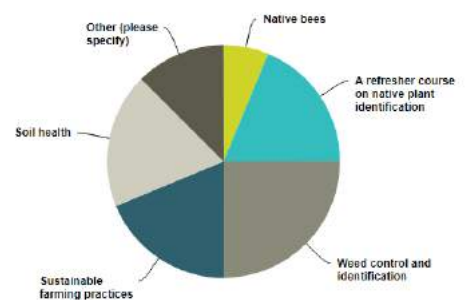
Do you think your knowledge of identification has increased as a result of this workshop?

Answered: 16 Skipped: 0



What sort of topics would you like more information on with regards to Natural Resource Management?

Answered: 16 Skipped: 0



Bellinger Landcare Inc. 1a Oak Street,

Bellingen/66550588/belland@westnet.com/www.bellingerlandcare.org.au

AROUND BELLINGEN



BELLO LEAF - NATIVE PLANT PROPAGATION

Bellinger Landcare hosted this workshop as part of the Bellinger LeafF - Learning Festival and as part of our Freshwater Habitat Action Grant funded by the NSW Environmental Trust. We will also be presenting on August 6th more about this project (see page 6) and plan to host another riparian field day this year. Engaging local bush regenerators and landcarers, this will be held on a property in Bellingen and will talk about how the river has changed over time and what we can do to protect the banks and integrity of the riparian ecosystems. As members you will hear about this first.



PROJECT LAUNCH - WATERWATCH

Back in May, Bellinger Landcare assisted with the launch of the Bellinger River Citizen Science Water Watch Project at the Thora Hall. A great turn-out of folks came along to find out what it is all about and sign up for water quality monitoring. This project compliments our Freshwater Riparian Habitat Project funded by the NSW Environmental Trust and the cross agency, organisational partnership means it will be a huge success. See page 5 for more information or go to OzGreen website.

NSW Waterwatch-Western Sydney
University-EarthWatch Institute-
OzGreen-Bellinger Shire Council-Eco
Logical-North Coast Local Land
Services-OEH-Taronga Zoo



THE PARTNERS

Thanks to Carmen Muldoon for the great photos



BELLINGEN RIVERWATCH

WATERWATCH WORKSHOP #2

SUNDAY 6th AUGUST 2017 - 12:30-5:00PM

ST ANDREWS UNITING CHURCH HALL

HYDE ST, BELLINGEN

Join Ingrid from NSW Waterwatch for our 2nd training session for the **Bellingen Riverwatch** project, to get ready for our monthly water quality testing starting on 8-9th August! Plus, there will be some speakers on current local river management projects; an update on Bellinger River Snapping Turtle research; and how managing foxes can help protect this critically endangered species.

**Please RSVP to Ingrid at nswwaterwatch@gmail.com
or 0405 761 593 by Friday 4th August 2017 5pm.**

For those that attended the Waterwatch session in June, we'll be repeating training on the same tests, but you're welcome to come along again.

NOTE: Our first catchment-wide sampling event is on 8 & 9 August!

In association with: Office of Environment & Heritage's Save Our Species Program,
OzGreen, Bellingen Shire Council, NSW Waterwatch, Bellinger Landcare,
North Coast Local Land Services, University of Western Sydney, Taronga Zoo Sydney,
EarthWatch Institute, EcoLogical Australia



AUSTRALIA NEW ZEALAND 2017 BIOCHAR CONFERENCE ANZBC17

10-12 AUGUST 2017

MURWILLUMBAH CIVIC & CULTURAL CENTRE & SHOWGROUNDS, NSW, AUSTRALIA

- Showcasing pyrolysis and gasification technology.
- Celebrating biochar science and commercial applications in agriculture, horticulture, remediation and building.



www.anzbc.org.au



PROUDLY SPONSORED BY



20 Million Trees - Landcare Australia

Tranche 3 of the 20 Million Trees Programme is now open! \$21 million in funding is available for large scale tree-planting projects covering a minimum of 100 hectares. Participation offers you the opportunity to work in partnership with Landcare Australia to complete large-scale revegetation projects on your properties at no cost. As a service provider, Landcare Australia works with landholders and community to plant appropriate native species, increase connectivity of native vegetation, and provide habitat for threatened species. Applications close on 31 July 2017.

Visit: <https://landcareaustralia.org.au/our-programme/20-million-trees/> to submit an Expression of Interest Form



20 MILLION TREES ROUND THREE NOW OPEN

Applications are invited for tree planting projects seeking funding between \$20,000 and \$100,000 (GST exclusive).

This is the third, and final, 20 Million Trees Competitive Grants Round.

Applications close Tuesday 15 August 2017.

Bellinger Landcare are currently compiling an application for landholders who fit the criteria in our shire. If you are interested to be part of this please email me nenglishbellingerlandcare@gmail.com

CLOSING DATES

ACT 31 JULY 2017
NT 4 SEPTEMBER 2017
SA 15 JULY 2017
VIC 28 JUNE 2017
WA 10 JULY 2017

NSW 17 JULY 2017
QLD 4 SEPTEMBER 2017
TAS 15 SEPTEMBER 2017



2017
STATE & TERRITORY
LANDCARE AWARDS

ENTER NOW



The volunteer who always goes above and beyond for their group. The farmer working tirelessly to implement sustainable farm practices. The team who works to educate the next generation. The young leader inspiring others. The innovators. The Coastcarers. The Indigenous land managers.

Whoever you are and wherever you fit in the Landcare movement, the 2017 State & Territory Landcare Awards celebrate you and your work. Get recognition and bring attention to the importance of Landcare to the community by nominating now.

Nominations have already closed in Victoria



LANDCARE AND LLS CONFERENCE

25th - 27th October 2017

Last chance to get your EOFY bargain tickets at \$495 per person and \$220 for self-funded delegates.

But hurry, payment must be received prior to 5 pm on Friday 30th June 2017. Visit: <http://nswlandcareconference.com.au/>



\$1,000 FUNDING GRANTS

Regional Australia Bank is helping local Landcare groups achieve their goals through their corporate sponsorship to Landcare NSW.

Using the funds provided, Landcare NSW is offering grants of up to \$1,000 (incl. GST) to support our Landcare group members to assist their volunteers. To apply, simply complete and submit the online application form at: <http://landcarensw.org.au/regional-australia-bank-funding/>. Applications close at 5pm on Monday 31st July.



2017 FORUM - KILLING FOR CONSERVATION

2nd September 2017

The Royal Zoological Society of New South Wales is holding its annual forum in Sydney. Visit <http://www.rzsnsww.org.au/rzs-nsww-annual-forum> for more information (or if you would like to present, or have an idea about a sub-theme).

Earlybird registrations close

24 August, 2017.

Are you a Landcare Storyteller?



Trevor and Carol Dean

Dorrigo

Just as there are tens of thousands of Landcarers, there are tens of thousands of Landcare stories, and we want to share yours!

By telling us your achievements, you can inspire others and raise awareness of the fantastic work being done to care for our land and water resources across the country. We share stories in our newsletters, social media profiles and quarterly Landcare in Focus publication – and we look forward to sharing yours.

<https://landcareaustralia.org.au/landcare-storytellers/>



National
Landcare
Programme



BELLINGER LANDCARE INC.

1A OAK STREET,
BELLINGEN

PHONE: 66550588

WEBSITE WWW.BELLINGERLANDCARE.ORG.AU

Australia's Environment Explorer

This online mapping tool is put together by the Australian National University and is fascinating! You can zoom into any of our landscapes and get data on tree cover, exposed soil, rainfall and run-off as well as soil moisture, fire intensity and occurrence and much more! Just type Australian Environment Explorer into your internet search engine.

ACKNOWLEDGEMENTS

We would like to acknowledge our supporters who make it possible to continue our work in the Bellinger-Dorrigo area. We receive support from the National Landcare Program via the Australian Government, North Coast Local Land Services and Bellinger Shire Council.

If you haven't visited our website, I would urge you to do so as there is loads of information.

This newsletter is produced by the Bellinger Landcare Office (BLI). Whilst every effort is made to publish accurate and up to date information,

BLI and its employees do not accept responsibility for inaccuracies and or opinions that may be expressed in this newsletter. This newsletter is produced with support from the Community

Capacity Support program which is supported by North

Coast Local Land Services, through funding from the National Landcare Programme and from the NSW Government's

Catchment Action NSW.

19th NSW Weeds Conference

Experience the Highs - working smarter together

16 - 19 October 2017; Armidale, NSW

Our theme of Experience the highs – working smarter together looks to build on the successes of the past whilst looking to the future as we transition into this new era in weed management and control, an approach that must be based on regional cooperation as well as providing a common focus for the actions of the numerous land managers across all tenures.

With this in mind, session themes will broadly revolve around Biosecurity in Action; Technology & Innovation; Community, Extension & Social Marketing; Collaboration & Case Studies with a special feature being the Open Debate.

Early Bird registrations close 1 September 2017.

For more information:

<http://conferencecompany.com.au/weedsconference/>



Australia's Environment Explorer

2016

